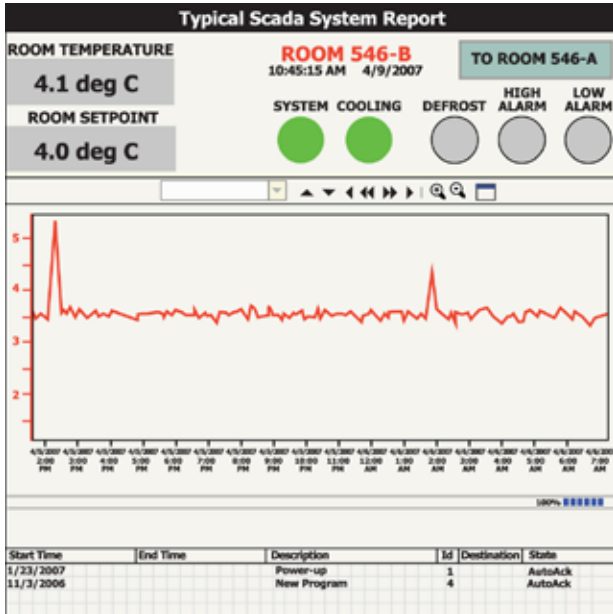


Environmental Room Controls



Environmental rooms, are locations where the environment needs to be controlled precisely. This can include temperature, humidity, flow, pressure, and lighting. Many different pieces of equipment are typically used to achieve the various levels of control required. ETTER's environmental controls act as the brains of the system, achieving the desired results by managing all of the equipment within a system.

ETTER Engineering has over 20 years experience designing and building custom UL approved controls for the environmental industry. With extensive knowledge of controls and the environmental process, we provide broad capabilities, including design, manufacturing and field service.

ETTER has hundreds of installations world-wide, supporting the OEM, Design-Built, and end-user markets.

From basic to complex, ETTER can satisfy your requirements!

Typical Features Include:



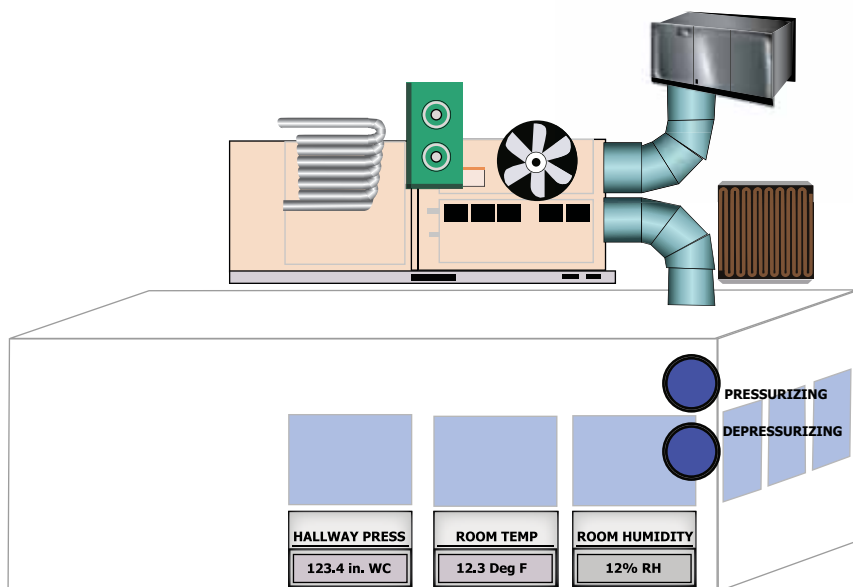
- All systems UL approved
- UL Canada, CE, CSA approval available
- Indoor, outdoor, and explosion proof ratings
- Data logging
- Remote monitoring, access and control
- Heating and cooling systems
- Humidity and dehumidity control
- Pressurization control
- Airflow control
- Access, door, and security control
- Chart recorders
- CFR 21 part 11 compliance systems
- GMP validated systems

Custom and Standard Control Systems for:

- Cold rooms
- Warm rooms
- Freezers and Walk-ins
- Environmental rooms
- Warehousing and storage
- Carcass and cell development rooms
- Media and evidence storage
- Test chambers

		RELEASE TO MANUFACTURING DATE: 1/23/2007
DESCRIPTION: DRYING SYSTEM FOR COATING LINE #7		REV: 01
CLIENT: ACME HEX FILES for MEMPHIS PLANT #2	DRYING SYSTEM FOR COATING LINE #7	DESIGN DRAWN CHECKED RELEASED
DRAWING NO. 1268-M-04-01	JOB NO. MECH # REV	SCALE: NTS
SHEET 1 OF X	X	DATE BY
ETTER ENGINEERING Co., INC. 210 CENTURY DR. BRISTOL, CT 06010 TEL: 860-584-8842 www.etterengineering.com		

Complete Room System



ETTER Engineering Environmental Controls Include the Following Features and Services:

From specification writing to turn-key installations;

- Initial sizing and design services
- Architecture and Engineer consulting
- Specification writing
- Equipment design and layout
- PID and logic diagrams
- Sequence of operations
- PLC and PC code writing
- Fabrication of equipment and controls in our in-house UL approved shop
- On-site installation and startup

ETTER's Partial List of Distinguished Clients:

- American Red Cross
- Genentech
- Rockefeller University
- University of Pennsylvania
- Good Housekeeping
- Anheuser Busch
- Wyeth / Pfizer
- Cornell University
- Harkness Eye Center
- Fluor Enterprises
- NYU Smilow Cancer Research Facility
- Memorial Sloan-Kettering
- Sanofi-Aventis Pharmaceuticals
- Merck & Co
- Columbia University
- University of Michigan
- Turner Construction
- Children's Hospital Philadelphia
- New York State Police
- Hoffmann-La Roche
- ImClone Systems
- Bristol-Myers Squibb
- University of Connecticut
- Amgen
- Kraft Foods
- Wuhan Brewery

