

ENHANCED OPERATOR INTERFACE: **FMA-5**

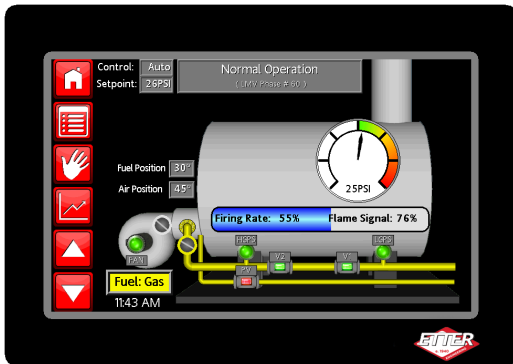


ETTER Engineering has developed a line of Enhanced Operator Interfaces, Series FMA-5X, designed to work exclusively with the SIEMENS LMV-5 Series of Linkage-less Burner Management Systems. The Operator Interface is a color touch-screen which replaces the single line AZL for Daily Operations, and provides graphical display of operating status, parameters, faults and alarms.

FMA-5 Series of Operator Interfaces

The FMA-5 Series provides a user-friendly interface to the LMV-5, with details such as:

- 4" Color TFT Touch Screen
- 7" Color TFT Touch Screen
- Remote communications to BMS and other devices
- Graphical display of the process
- Alarm logging with history
- Optional 16 point digital Input Annunciator for:
 - First Outage Annunciation with time and date logging of each independent fault
 - Optional enclosure version for existing field retrofits



Parameters Available Through the FMA Enhanced Interfaces Include:

- Burner Phase
- Fuel Selection
- Safety Loop Data
- High Gas Pressure Switch
- Controller On/Off State
- Ignition On/Off
- Running Mode
- Last Error Code
- Last Error Class
- Error History, up to last 100 Errors
- Dual Fuel Control
- Efficiency & O2 Trim (Optional)
- Opacity Monitoring (Optional)
- Feedwater Control (Optional)
- Fuel Actuator Position
- Flame Signal
- Low Gas Pressure Switch
- Air Pressure Switch
- Valve Proving System Status
- Fan On/Off
- Start Counter
- Last Error Diagnostic Class
- Last Error Phase
- Last Error Time & Date
- Field Configurable
- Adjustable P.I.D.
- Draft Control (Optional)

