

# ETTER



INTELLIWORX

## IntelliWorx EPM - Process Monitoring

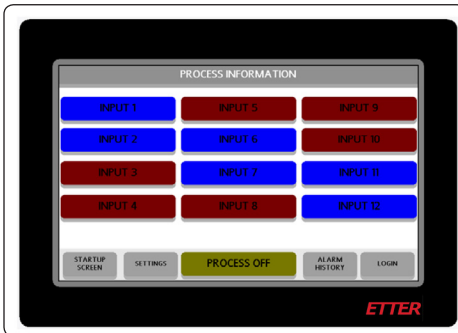


In the manufacturing world, downtime is costly. Every minute your equipment spends down is time not spent producing product, which costs you money! ETTER Engineering's IntelliWorx EPM Process Monitor watches over your process and alerts you with alarms in plain language as soon as a problem arises.

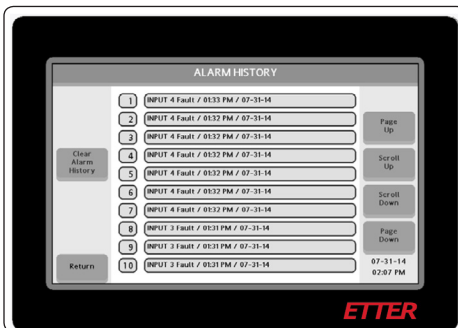
IntelliWorx is built in ETTER's UL-508A Control Panel shop. It is designed to easily interface and communicate with the equipment in your facility, and can be mounted in an existing enclosure or located in its own, standalone box.

### ETTER IntelliWorx EPM Highlights:

- » 4" or 7" color touchscreen
  - Users can easily determine equipment status and alarm codes
- » Up to 18 customizable inputs
  - Monitor exactly what you want
  - Digital and analog signals
- » Instantly pinpoint what is causing faults and outages with your equipment
- » Alarm History screen shows historical data with time and date information



IntelliWorx Home Screen in fault

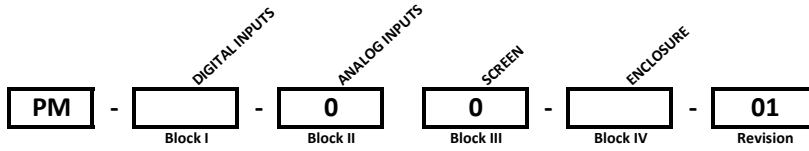


IntelliWorx History Screen

ETTER is ready to assist you with all your Industrial control and monitoring needs, from System Engineering and Design, to retrofits, upgrades service and preventative maintenance.

To speak to an ETTER Sales Engineer or Service Technician today, please call 800.444.1962!

# INDUSTRIAL PROCESS MONITORING SYSTEM



**Block I**      **"A" - NUMBER OF DIGITAL INPUTS**

- I      - 6 Digital Inputs, PLUS a PROCESS ON to latch alarms
- II     - 12 Digital inputs, PLUS a PROCESS ON to latch alarms
- III    - 18 Digital inputs, PLUS a PROCESS ON to latch alarms

**Block II**      **"B" - TYPE OF ANALOG INPUTS**

- 0      - No Analog Inputs

\* Analog inputs are screen configured for scaling, Labels, and Alarm point

**Block II**      **"C" - NUMBER OF ANALOG INPUTS**

- 0      - No Analog Inputs

**Block III**      **"D" - SCREEN OPTION**

- 4      - 4" Color Touchscreen
- 7      - 7" Color Touchscreen

**Block IV**      **"E" - ENCLOSURE TYPE**

- OP     - Open panel mount, with Loose screen and 3m Communications cable
- N1     - NEMA 1 Enclosure mounted
- N4     - NEMA 4 Enclosure mounted
- OD     - Outdoor rated, in Fiberglass enclosure with window and heater