



E101P-S-GEN-UPS-TRNS-VZW

Outdoor Packaged Gas Booster



Over the past decade ETTER has worked extensively with field installation crews, site engineers, and corporate management of wireless service providers to develop a product that has become the leading stand-alone and complete solution for outdoor gas boosters that simply cannot go off-line.

ETTER is proud to present the E101P-S-GEN-UPS-TRNS-VZW.

The ETTER Engineering E101P-S-GEN-UPS-TRNS-VZW packaged gas booster system is designed to pump low volumes of natural gas and provide a static pressure boost over incoming gas pressure when required.

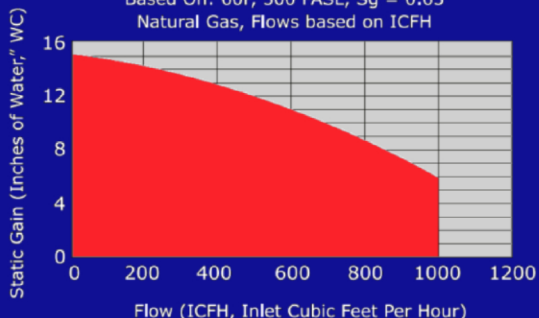
This unit has a capacity range from 0 to 1000 CFH and provides a static gains from 7" w.c. up to 15" w.c. dependant on flowrate. An outlet gas pressure regulator sets a constant outlet pressure over a range of flow rates. Performance information for this unit is shown in the sizing curve below.

The E101P-S-GEN-UPS-TRNS-VZW comes equipped to face the toughest winter weather. The entire unit is inserted in a welded steel enclosure that provides protection from the elements and includes locking keyed doors to prevent tampering.

Ideal for serving an Emergency Standby Generator or other critical operations, this package also contains an integrated Smart Uninterruptible Power Supply (Smart UPS) that provides true sine wave electrical output when the supply power is interrupted.

Flow Capacity : E101P-S-GEN-UPS-TRNS-VZW

Based On: 60F, 500 FASL, $S_g = 0.65$
Natural Gas, Flows based on ICFH



Pricing is readily available! To learn more, call the factory at 1-800-444-1962

Or visit us online at www.etterengineering.com



E101P-S-GEN-UPS-TRNS-VZW

Outdoor Packaged Gas Booster

The E101P-S-GEN-UPS-TRNS-VZW is designed as a “Plug-and-Play” unit. In addition to the items mentioned above, it comes completely pre-piped, wired, and tested for your application with:

- Metal skid-style frame with all components mounted & wired
- UL approved gas booster pump & components
- 1” NPT union ends inlet and outlet for easy installation
- NO minimum flow rate requirement – Pump can be dead-headed with no adverse effects!
- ¼ HP TEFC motor, 120/1/60
- Pre-Plumbed check valve, bypass, gauges, flex hoses, and low gas pressure switch
- Transclosure houses heated zone for UPS that is mounted within the system for complete stand-alone capability
- UL-Listed Control Panel includes:
 - Motor starter, circuit breakers, control relays, and timers
 - Lights and Push Buttons
 - Operating Interlock

Enclosed please find copies of catalogue information for the major components and items listed above. We have also included the following drawings:

DRAWING:	DESCRIPTION:	REV:
E101P-S-GEN-UPS-TRNS-VZW-01	General Arrangement	01
E101P-S-GEN-UPS-TRNS-VZW-01	Booster Control Panel Schematic	01

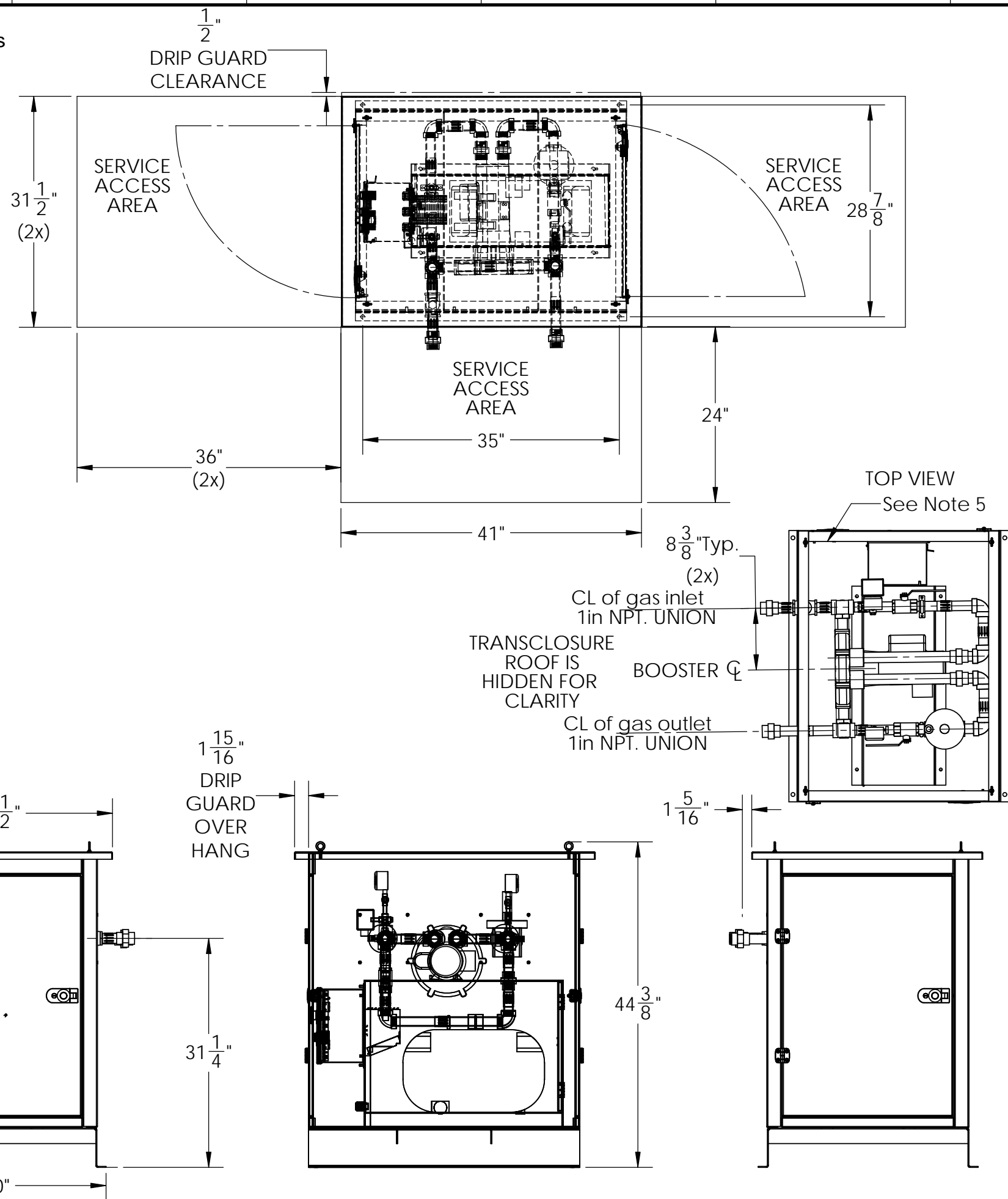
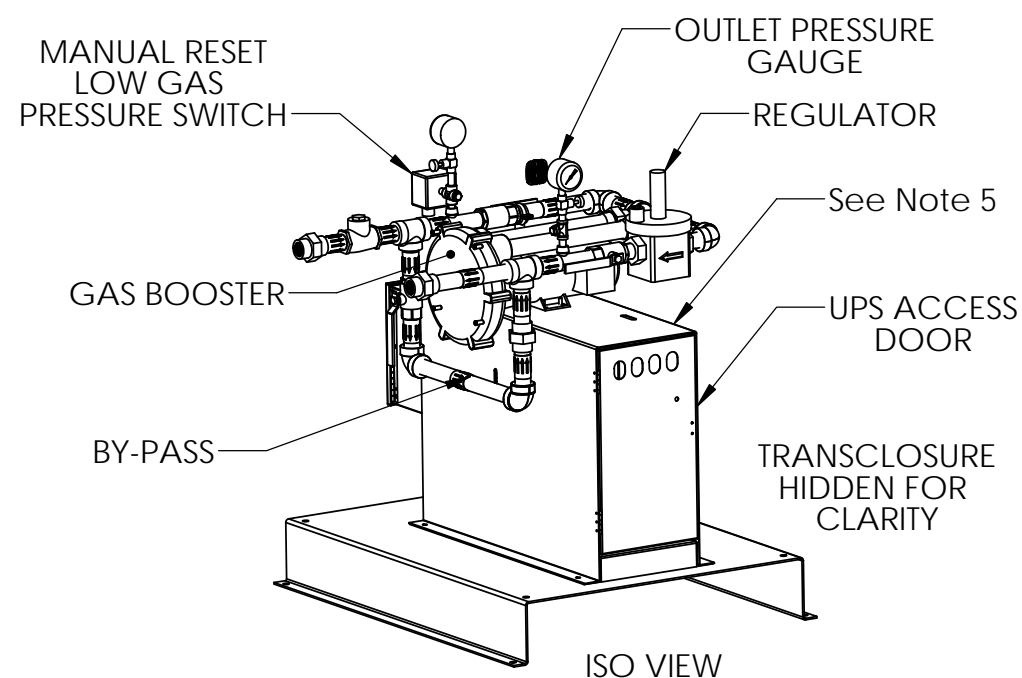
Please feel free to contact us should you have any technical questions regarding this quotation. We thank you for your continued interest in ETTER Engineering and our pre-packaged systems.

Respectfully Submitted:

ETTER Engineering Company, Inc.

NOTES: (All federal, state, and local gas and plumbing codes should be followed and take precedence over these instructions. These requirements are location sensitive.)

1. Drawing not to scale, use for concept layout only
Dimensional footprint is correct for space requirements
2. Some components may not be shown for clarity
3. Locate assembly so that adequate access to service equipment from all sides is provided.
4. Unit should be anchored to floor, dunnage or concrete pad.
5. Transclosure hidden in isometric view and roof hidden in top view.
6. Equipment should be located in a safe, non-traffic area not in close proximity to sources of ignition.
7. Manual reset inlet gas pressure switch to be set to meet requirement of local gas utility. (Typically set between 2" & 4" WC)
8. Optional switches set to meet intent and application requirements, this will vary from application to application.



CLIENT:		DESCRIPTION: E10TP PACKAGE w/OUTDOOR TRANSCLOSURE & UPS EQUIPMENT		DRAWING NO.		SHEET 1 OF 1		SCALE: NTS		DATE	
1940		ETTER ENGINEERING Co., INC.		210 CENTURY DR. BRISTOL, CT 06010		TEL: 860-584-8842		www.etterengineering.com		BY	
1940		ETTER ENGINEERING Co., INC.		210 CENTURY DR. BRISTOL, CT 06010		TEL: 860-584-8842		www.etterengineering.com		REV	
1940		ETTER ENGINEERING Co., INC.		210 CENTURY DR. BRISTOL, CT 06010		TEL: 860-584-8842		www.etterengineering.com		DESCRIPTION	
1940		ETTER ENGINEERING Co., INC.		210 CENTURY DR. BRISTOL, CT 06010		TEL: 860-584-8842		www.etterengineering.com		DATE	

UNLESS OTHERWISE SPECIFIED ALL DIMENSIONS ARE IN INCHES

THIRD ANGLE PROJECTION

DESCRIPTIONS CONTAINED HEREIN ARE FOR INFORMATION ONLY AND ARE NOT TO BE USED FOR ANY OTHER PURPOSE OTHER THAN THAT FOR WHICH IT IS BEING MADE AVAILABLE WITHOUT THE WRITTEN PERMISSION OF: ETTER ENGINEERING Co., INC.

